

## TRANSMISSION BELTING

Flat type rubber transmission beltings are used for pulley to pulley power transmission in textile mills, flour mills, stone crushers, threshers, rice mills, agriculture and other industrial usage and Universal offers high grade rubber compounded belt with pre-stretched fabric of great tensile strength to give trouble-free service.

*Courroies plates en caoutchouc de transmission sont utilisées pour la transmission de force entre les poulies dans les usines de textiles, minoteries, casses pierres, des batteuses agricoles et d'autres usages industries et Universal offre les courroies composées en caoutchouc de haute degré avec un tissu préétiré à tolérance de grande tension afin de rendre un service sans problème.*

Cintas planas de transmisión se utilizan para la transmisión de potencia de polea a polea en fábricas de textil, molinos de harina, moleros de piedra, máquina de trillar, molino de arroz, agricultura y otra utilidad industrial y Universal ofrece cintas de goma compuesta de alto grado con fábrica pre-estrechada de alta fuerza de tensilo para dar servicio libre de problemas.

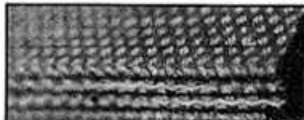
### TRANSMISSION BELTING RANGE

(Conforming to BS : 351 and IS : 1370)

*Gamme de courroie de transmission.  
(Selon le BS : 351 et IS : 1370)*

### GAMA DE TRANSMISSION

(Conforme con BS : 351 y IS : 1370)



Qty. Type	Brands	#Edge Construction	~Widths (mm)	*Colour	~ Ply	App. Wt. per 25mm = 1' per ply per meter
Qté type	Marque	#Construction de dentelle	~Largeur	*Couleur	~ Toron	Poid de courroie par 25 mm de largeur par toron/m.
Tipo de Calidad	Marcas	#Borde construcción	~Anchura + (mm)	*Color Acero	~ Travesias	Peso de cinta (aprox.)
(1) 28oz (light duty)	<b>Universal Super</b>	Cut	25, 31, 37, 50, 62, 75, 88, 100	light grey with blue sides	3, 4, 5	0.037
(2) 31oz (medium duty)	i) <b>Universal Kinetic</b> ii) Tor Steel iii) Tusker Super Deluxe	Cut	25, 31, 37, 50, 62, 75, 88, 100 125, 150, 175, 200	do	3, 4, 5, 6	0.038
(3) 34oz (heavy duty)	i) <b>Universal Oak</b> ii) Dynapower iii) Cannon	Cut	37, 50, 62, 75, 88, 100 125, 150, 175, 200, 225, 250 150, 175, 200, 250, 300	do	4, 5, 6 8	0.040
(4) 37oz (extra heavy duty) exclusively mfd. to our standards	i) <b>Universal Brute</b> ii) <b>Rhino</b>  (super tough quality)	Cut	75, 100, 125, 150, 200, 250  150, 200, 250, 300, 350, 400	do	4, 5, 6 8, 10, 12	0.045
(5) 31oz (medium to high duty)	i) <b>Universal Black Belt</b> ii) Black Stone (with 0.4 mm app. thick black rubber coating on face & bottom frictioned)	Cut	75, 100, 125, 150	black	4	0.045

Transmission Belt - RANGE & SPECS

# Round edge construction with red stripe in middle are also manufactured in 28oz, 31oz qty., types subject to min. quantity of orders are placed as required at higher charges than cut edge for which please refer to us.

\* Other colours are also mfd., like orange (TBS) with red sides or light green with green sides on little extra charges subject to min. quantities of orders are placed.

~ Widths and piles not listed above can be mfd. to order ranging sizes from 25 mm to 1050 mm widths and 2 ply to 14 ply.

Tolerance in width of  $\pm 3$  mm shall be applicable upto 125mm;  $\pm 4$ mm above 125 mm upto 300 mm;  $\pm 5$  mm above 300 mm & upto 500 mm;  $\pm 10$ mm above 500 & upto 750 and  $\pm 15$ mm above 750 mm & upto 1050 mm widths.

### MINIMUM RECOMMENDED PULLEY DIAMETERS (in mm)

DIAMETRES MINIMUMS PRECONISEES DE POULIE.

DIAMETROS RECOMENDADOS DE POLEA (en mm)

Number of Plies	Belt speed (mtrs/sec.)				
	Vitesse de courroie (metres/sec)				
	Velocidad de cintas (metros/seg.)				
	10	15	20	25	30
3	90	100	112	140	180
4	140	160	180	200	250
5	200	225	250	315	355
6	250	315	355	400	450
7	355	400	450	500	560
8	450	500	560	630	710
10	630	710	800	900	1000

### RECOMMENDED PULLEY WIDTHS

LARGEURS PRECONISEES DE POULIES.

ANCHURA RECOMENDADA DE POLEA (en mm)

Belt Width	Pulley to be wider than the belt width by
Largueur de courroie	Poulie doit etre plus large que courroie par
Anchura de	Cinta Polea a ser mas ancha que la anchura de la cinta por
Upto and including 125 mm	15mm
From 125 mm upto & incl. 250 mm	25mm
From 250 mm upto & incl. 375 mm	40mm
From 375 mm upto & incl. 500 mm	50mm

### BELT FASTENERS

While vulcanised splices i.e., endless belt is strongly recommended but whenever it is not convenient to use endless belts, then wire hookjoints/sheet steel stampings/strap or plate joints may please be used. Please refer for fitting to the fasteners manufacturer/supplier for suitable selection.

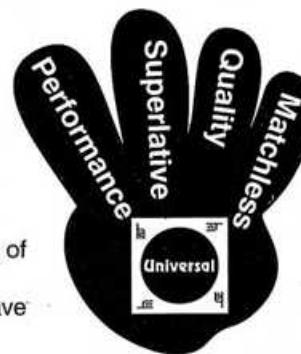
### CHECK LIST FOR PROPER MAINTENANCE

- New belts are stored in a cool, dry and well ventilated place.
- Belts are jointed with correct & suitable fasteners.
- Belt dressing is not used.
- Belts are kept clean free from oil and grease on pulley faces.



### LENGTHS MANUFACTURED, ORDER QUANTITIES AND PACKING

- Belts are supplied in roll lengths of 100 mtrs in each size subject to length tolerance of +12%, -2% in running lengths & billing is done in terms of actual length.
- Min. qty. acceptable are 1200 mtrs. in one quality type & in 1 type of ply rating but may have different sizes (widths) due to mfg. requirements.
- Packed in polythene and then further packed in sea worthy hessian cloth.



Transmission Belt - TECHNICAL DATA